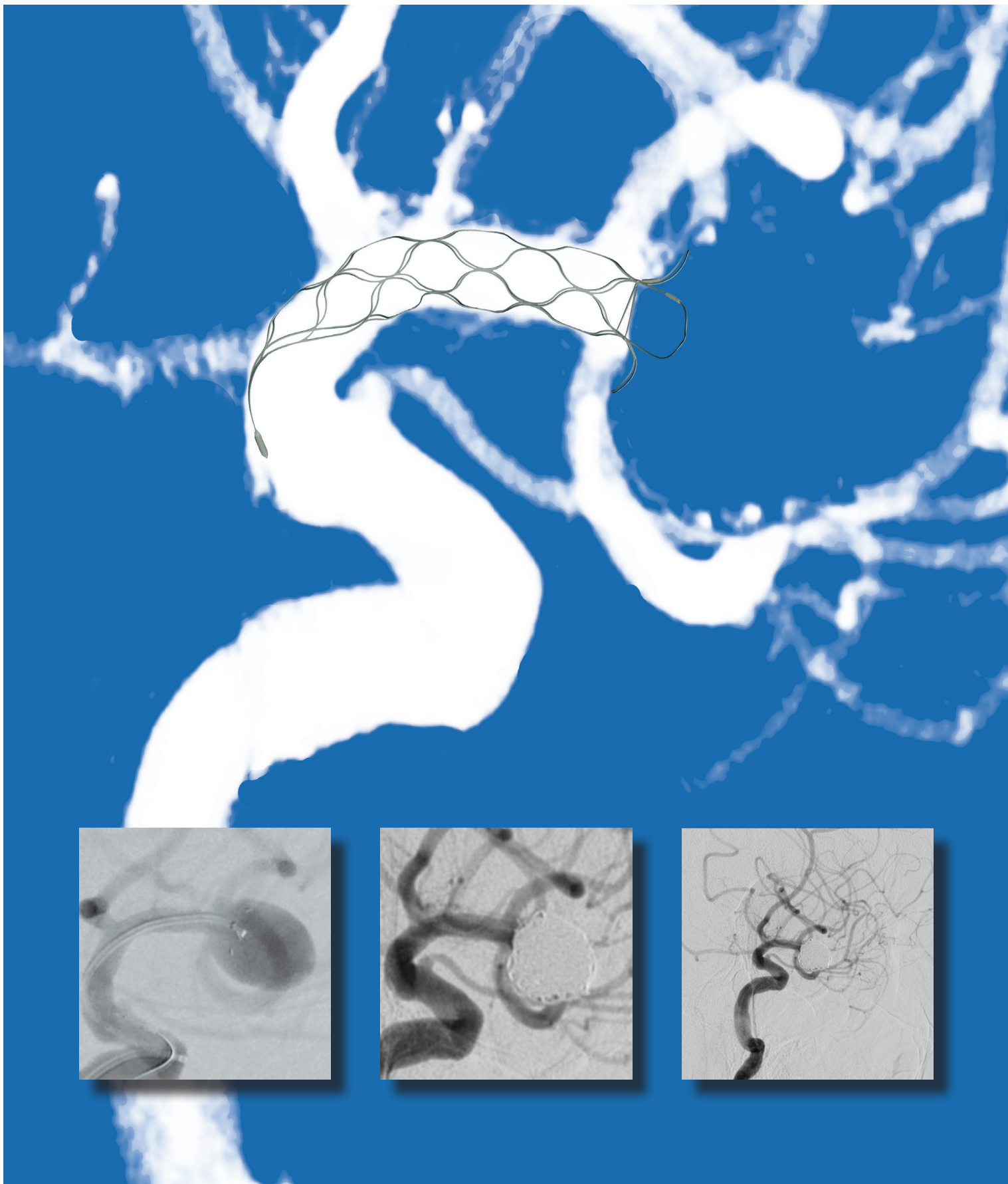


pCONus

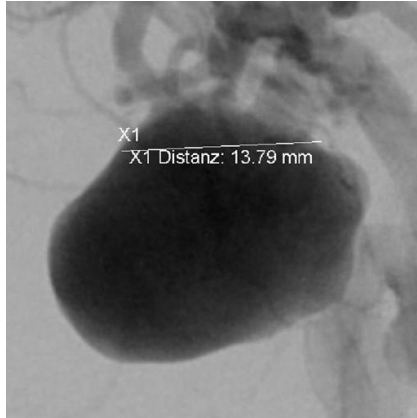
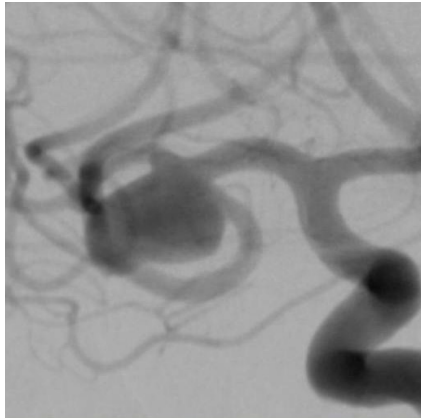
Bifurcation Aneurysm Implant

Making the complex **simple and safe**



pCONus Bifurcation Aneurysm Implant

How do you treat complex wide neck bifurcation aneurysms?

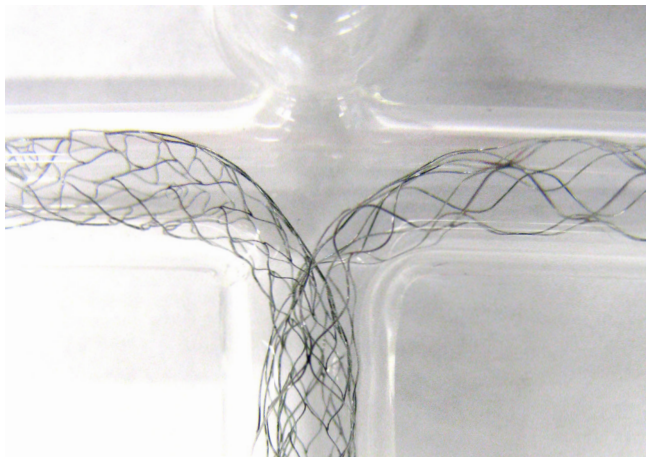


The pCONus Bifurcation Aneurysm Implant is a new category of intraluminal device intended to treat complex, wide neck intracranial bifurcation aneurysms. It is designed to support the coil mass at the level of the neck of those aneurysms that cannot be easily coiled or surgically treated.

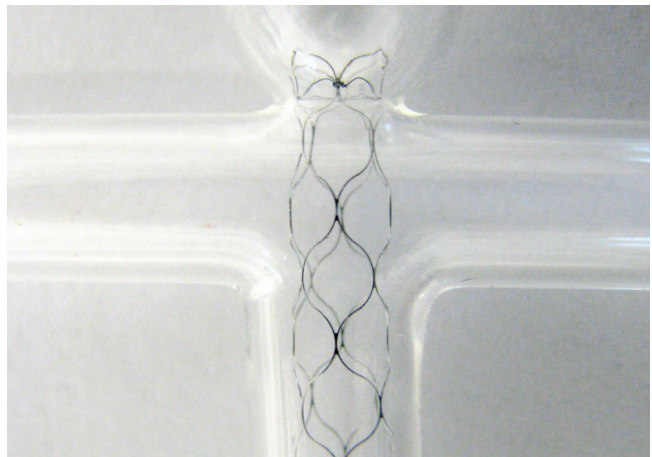
- Stent-like structure for secure anchoring and long-term stability
- Complete deployment and recoverability ensures optimal placement
- Distal Crown & Petals provide bridging structure at the level of the neck
- Nylon net supports coil mass within the aneurysm
- Electrolytic detachment via a new proprietary process
- Compatible with a 0.021" ID microcatheter

pCONus provides **significantly less metal**
within the bifurcation and no metal in efferent vessels

Y-stenting technique with 2 stents

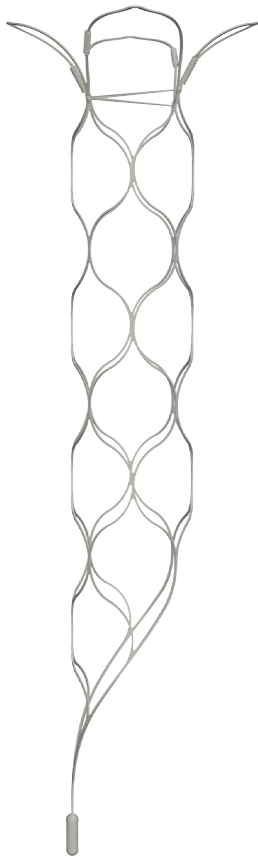


pCONus as single device



pCONus Bifurcation Aneurysm Implant

Simplifying complex treatment of wide neck aneurysms



pCONus Crown

Petals and Nylon Net support coil mass in wide neck aneurysms and prevent it from collapsing into parent artery

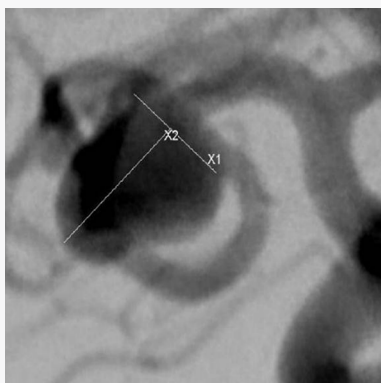
pCONus Cell Structure

Less than 5% metal to artery surface ratio leads to lower thrombogenicity

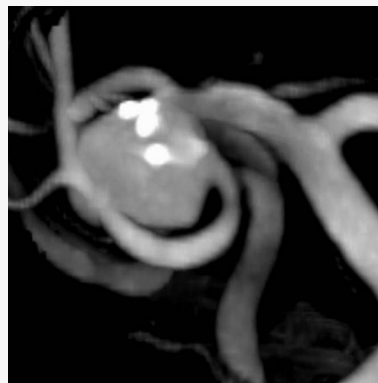
pCONus Electrolytic Detachment

Enables full deployment and recovery – Ensures optimal positioning and placement within aneurysm

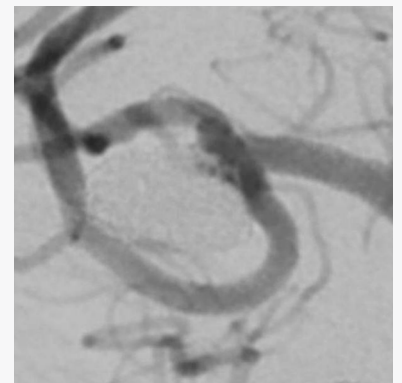
55 y/o female with right MCA Bifurcation Aneurysm treated with pCONus 4-25-8



Asymptomatic wide neck (6 mm) aneurysm. The superior and the inferior trunk of the MCA are partially integrated into the aneurysm neck.



The pCONus is implanted to prevent the coils from displacement into the inferior trunk of the MCA.



2nd follow-up DSA about 4 months after the treatment confirms the complete aneurysm occlusion. The daughter aneurysm is no longer visible.

Case images in this brochure by courtesy of Prof. Dr. Hans Henkes, Katharinenhospital Stuttgart

pCONus Bifurcation Aneurysm Implant

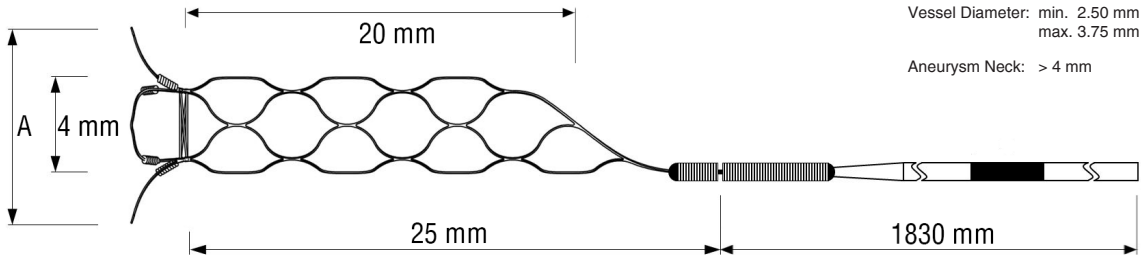


pCONus

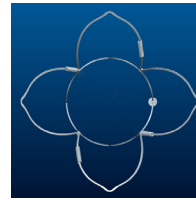
Bifurcation Aneurysm Implant



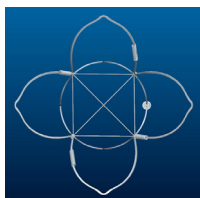
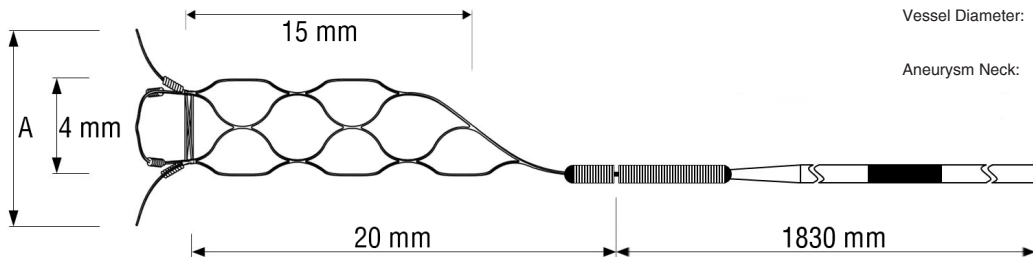
Making the complex **simple and safe**



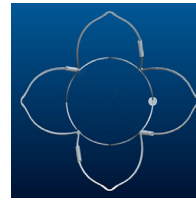
REF	Distal diameter (A) [mm]
PCON-4-25-5-F	5
PCON-4-25-6-F	6
PCON-4-25-8-F	8
PCON-4-25-10-F	10
PCON-4-25-12-F	12
PCON-4-25-15-F	15



REF	Distal diameter (A) [mm]
PCON-4-25-5	5
PCON-4-25-6	6
PCON-4-25-8	8
PCON-4-25-10	10
PCON-4-25-12	12
PCON-4-25-15	15



REF	Distal diameter (A) [mm]
PCON-4-20-5-F	5
PCON-4-20-6-F	6
PCON-4-20-8-F	8
PCON-4-20-10-F	10
PCON-4-20-12-F	12
PCON-4-20-15-F	15



REF	Distal diameter (A) [mm]
PCON-4-20-5	5
PCON-4-20-6	6
PCON-4-20-8	8
PCON-4-20-10	10
PCON-4-20-12	12
PCON-4-20-15	15